

Showker Hall Classroom Touch Panel Guide

This guide will provide an overview of the touch panel for the classrooms in Showker Hall. By the end of the guide, users should have a basic understanding of the operations of the classroom touch panel which include:

- Selecting the correct display for the desired source.
 - The process of selecting inputs.
 - Microphone controls.

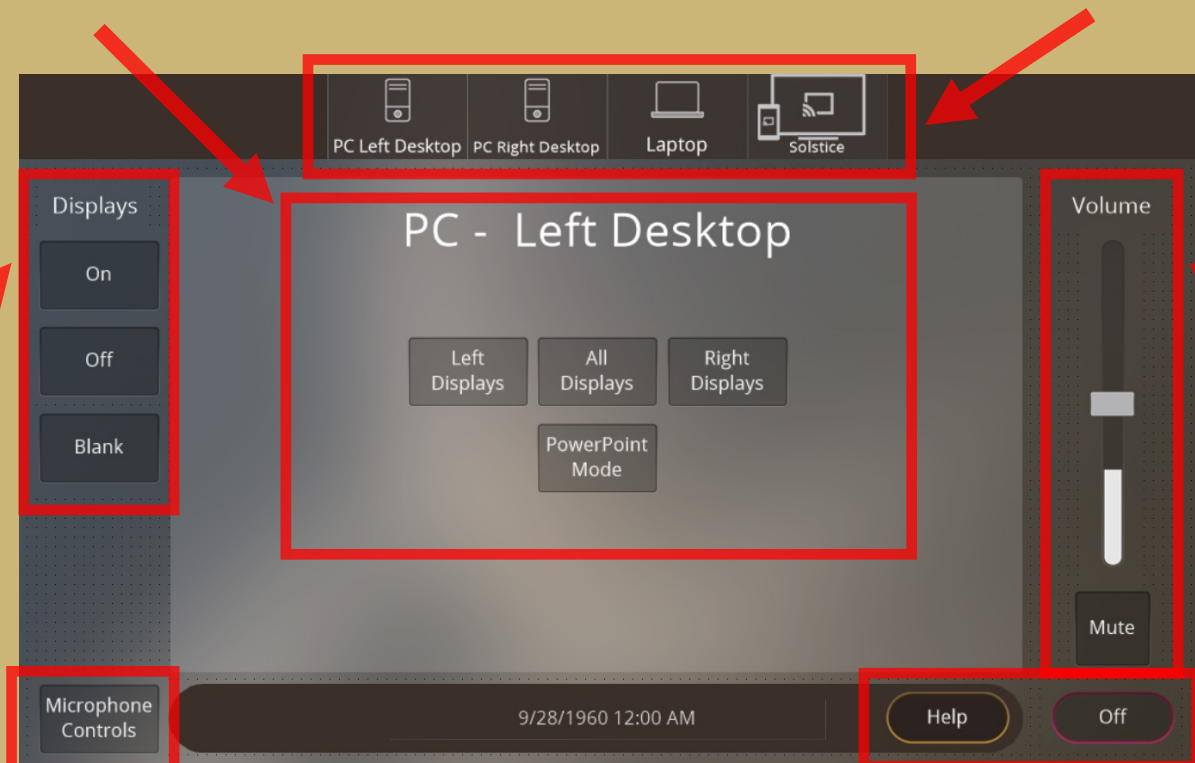
Touch Panel Overview

The area in the middle of the touch panel allows the users to select which display they would like to send the desired source to. Each source will have their own display controls.

“PowerPoint Mode” will send the presentation notes to the confidence monitors in the back of the room.

This area lists all the available sources that can be selected in the classroom. Press the desired source and which display to send the source to below.

Note:
“PC Left Desktop” and “PC Right Desktop” act as two different sources.



This area controls the “On/Off” functions for all displays in the room. The “Blank” function will darken the displays except the monitors.

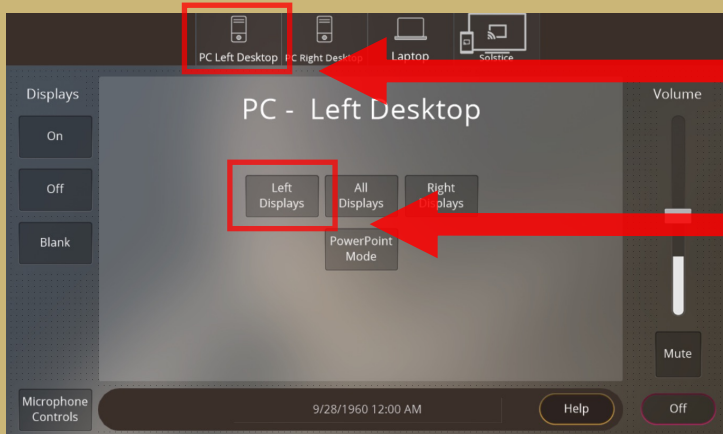
The “Microphone Controls” button allows users to adjust the volume for the microphone. Pressing this button will take you to a different pop-up page.

Press “Off” to shutdown the system. Press “Help” to contact Classroom Support.

This slider allows the users to adjust the volume in the room (not used for microphone)

Process for Source Selection

In this selection, the guide will offer a demonstration on how to send specific sources to the desired displays. The guide will demonstrate how to send “PC Left Desktop” source to the “Left Display” and “Solstice” source to the “Right Display”.

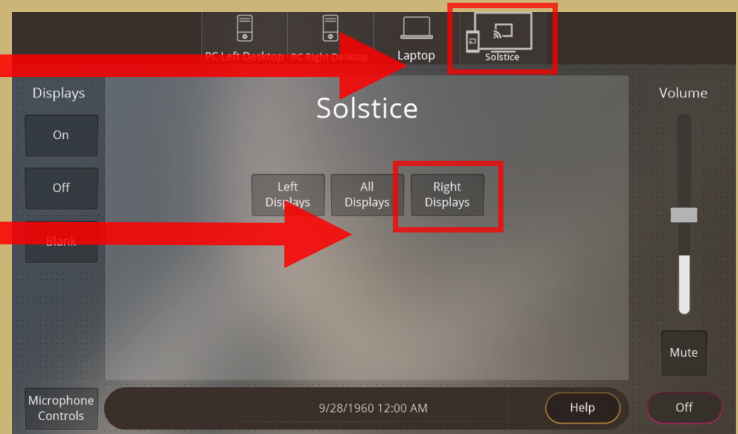


1 – Select the source (PC Left Desktop) that you are planning to show content from.

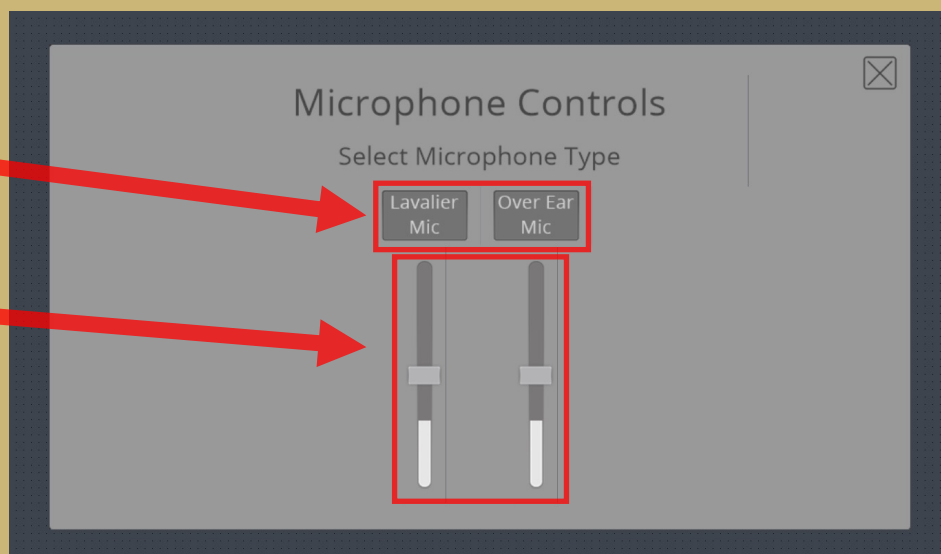
2 – Next select the display (Left Displays) you would like to send the source to.

3- Select the second source (Solstice) to display.

4 – Select the other display (Right Displays) that you want to send the source to.



Microphone Controls



1 – Select the type of microphone you are using.

2 – Once the correct mic is selected, use the slider to adjust the mic level.