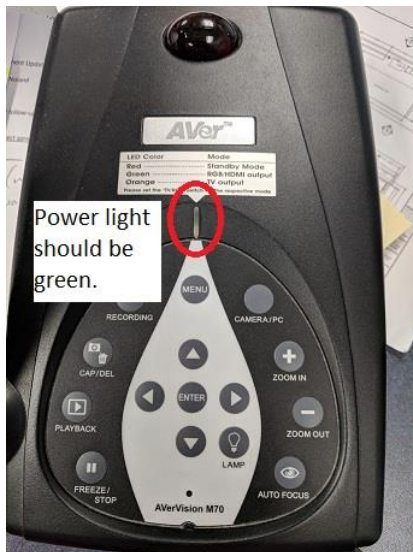


Document Camera instructions (non-USB style DocCams)

In classrooms where the Doc Cam is not a HoverCam Solo 8, (as shown below), select the DocCam source button to send the DocCam image to the projector and local monitor.

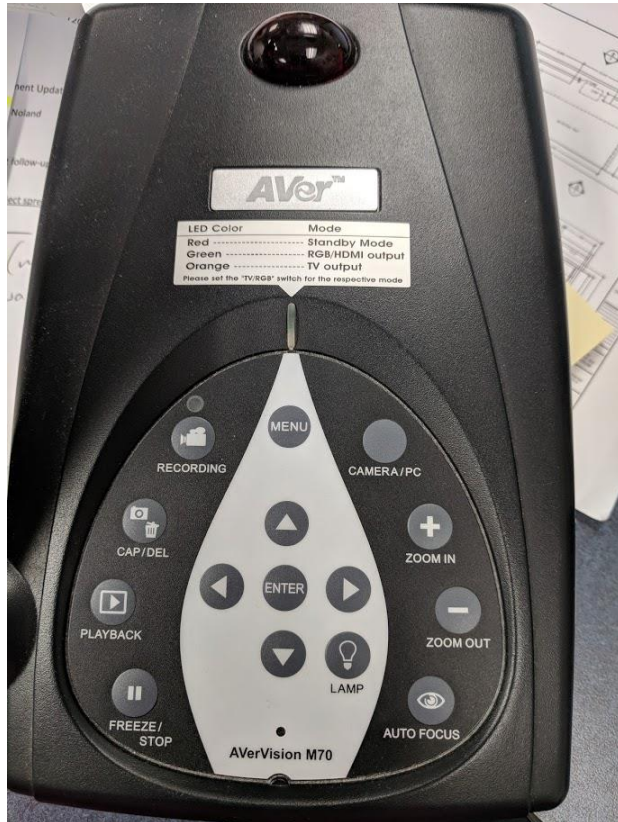


Verify the DocCam is on by checking that the light is green. If not, press the power switch on the side of the document camera.



Document Camera touch button control panel:

The touch button control on the top side of the document camera provides quick access to commonly used functions.



Buttons on the right side are used most often.

Make sure the Camera/PC button is on Camera.